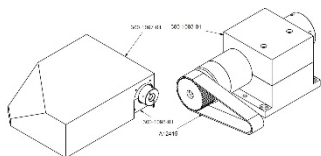


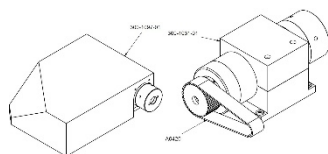


-OPTIONS



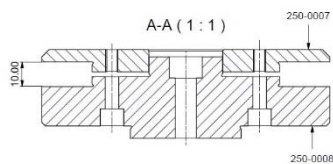
300-0114-01

Spindle system  $\varnothing 60\text{mm}$   
Range from  $\varnothing 0$  to  $\varnothing 280$



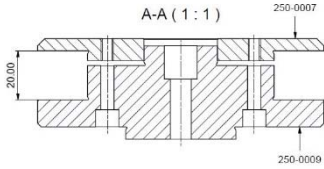
300-0113-02

Spindle system  $\varnothing 80\text{mm}$   
Range from  $\varnothing 20$  to  $\varnothing 300$



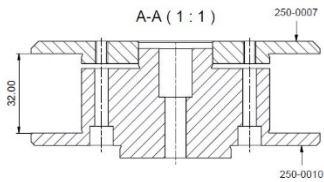
A0291

Flange for dressing wheel SIC Thickness 10mm



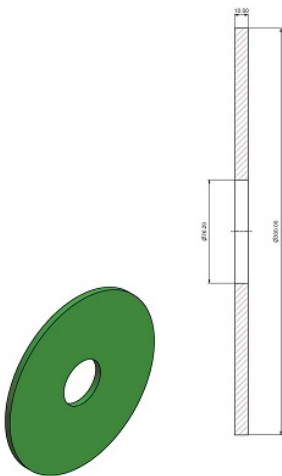
A0292

Flange for dressing wheel SIC Thickness 20mm



A0293

Flange for dressing wheel SIC Thickness 32mm



SIC Type 1

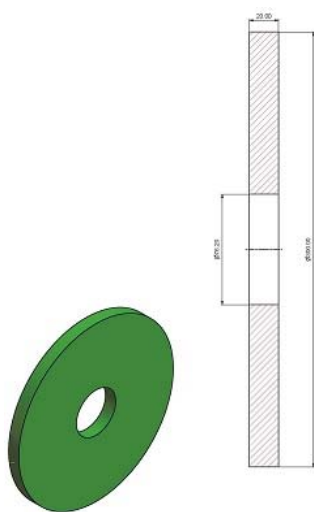
∅300x10x76.20

**A12673** SC9 1000 J12 RE DM

**A12678** 80C 500 I7 V62A

**A12667** 10C 320 KL7V

**A12611** 10C 120 KL7V



SIC Type 1

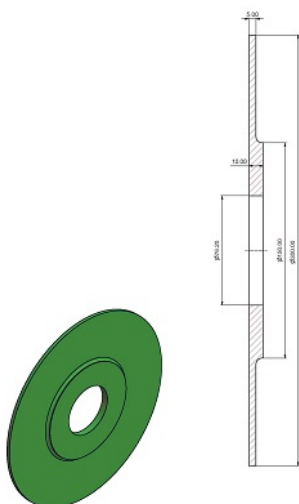
Ø300x20x76.20

**A12674** SC9 1000 J12 RE DM

**A12679** 80C 500 I7 V62A

**A12668** 10C 320 KL7V

**A12612** 10C 120 KL7V



SIC Type 38

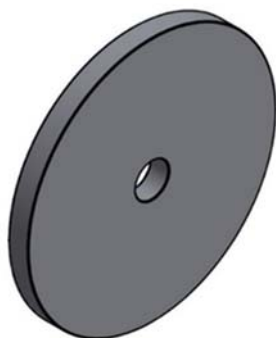
Ø300x10x76.20 U5-J140

**A11128** 15C 1000 N7BY1

**A12677** 80C 500 I7 V62A

**A12669** 10C 320 KL7V

**A12613** 10C 120 KL7V



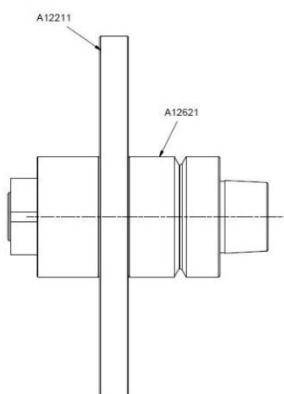
A12211

Gauge Wheel Ø150.00-H20.00-T12.00



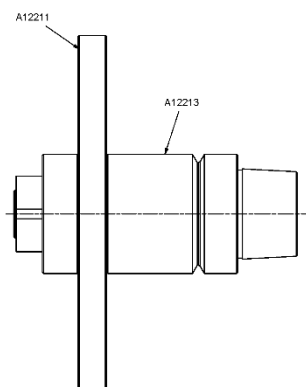
A0152

Gauge Ø150 / PA25



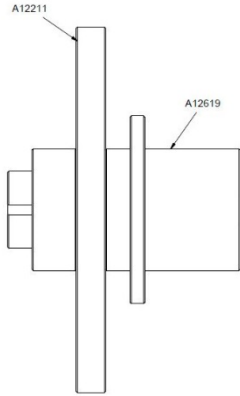
A12623

Gauge Ø150 / HSK-E40



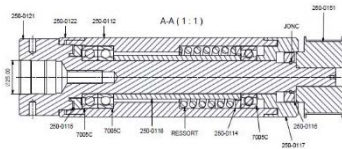
A12356

Gauge Ø150 / HSK-E50



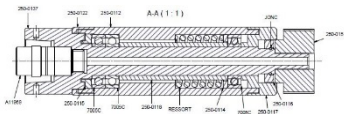
A12624

Gauge  $\varnothing 150$  / NCT50



A0378

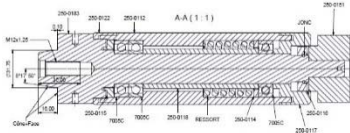
Spindle  $\varnothing 60$  for Perfectarbor PA25



A0411

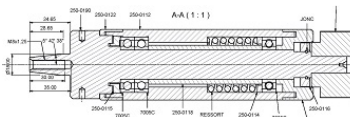
Spindle  $\varnothing 60$  for HSK-E50





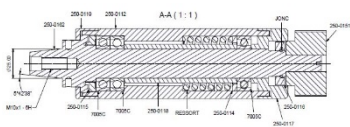
A0645

Spindle Ø60 for NCT50 (Machine Walter )



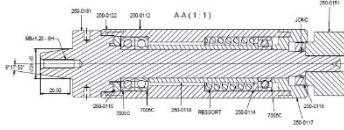
A12380

Spindle Ø60 for Cone 5°42'38" -M8 (machine M+Z)



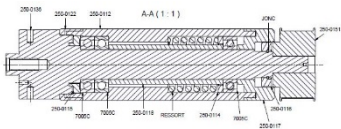
A0483

Spindle Ø60 for Cone 5°42'38"-M10x1 (machine TTB)



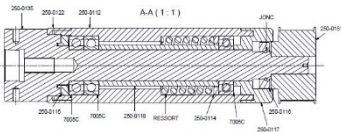
A0631

Spindle Ø60 for ISO30-M8 (Machine ANCA)



A0376

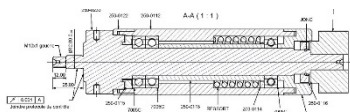
Spindle Ø60 for Rotoline (Machine EWAG)



A0377

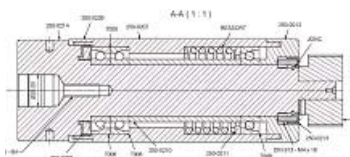
Spindle Ø60 for Rollomatic 148P4 Ø25-cone





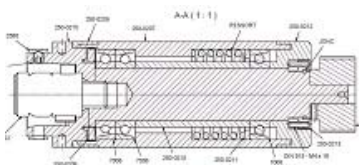
A12664

Spindle  $\varnothing 60$  for EWAG WS11



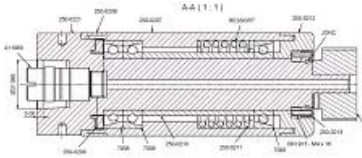
A12544

Spindle  $\varnothing 80$  for perfectarbor PA25



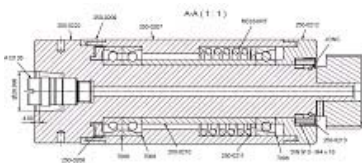
A12184

Spindle  $\varnothing 80$  for HSK-C63



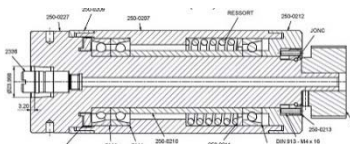
A12548

Spindle Ø80 for HSK-E50



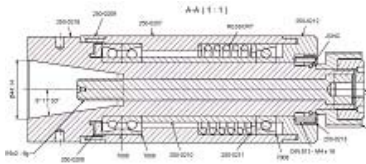
A12549

Spindle Ø80 for HSK-E40



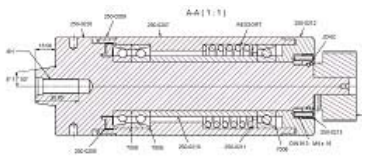
A12594

Spindle Ø80 for HSK-E32



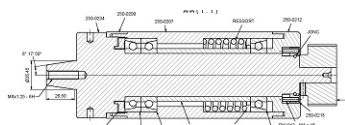
A12546

Spindle Ø80 for BT40



A12547

Spindle Ø80 for NCT50 (machine Walter)



A12676

Spindle Ø80 for ISO30-M8 (machine ANCA)



A12414

Adaptator for pulley Rollomatic Z33

**-ACCESSORIES**



250-0079

Screw M8 -Left for flange wheel SIC



300-5005-01

Set window Rotolamp



A12415

Belt 25/T5 -375mm  
For option with spindle  $\varnothing 60$



A0420

Belt 25/T5 -355mm  
For option with spindle  $\varnothing 80$



250-0152

Pulley Motor25/T5 Z15



250-0151

Pulley Spindle 25/T5 Z36



Cartridge HSK

<b>A12509</b> Tightening key AX32	<b>A12336</b> Cartridge AX32
<b>A12129</b> Tightening key AX40	<b>A12128</b> Cartridge AX40
<b>A11970</b> Tightening key AX50	<b>A11969</b> Cartridge AX50



Hexagon screwdriver

**A12595** hexanon screwdriver 4x240mm for AX32  
**A12596** hexanon screwdriver 5x240mm for AX40  
**A12015** hexanon screwdriver 6x240mm for AX50



### Cleaner HSK

- A12706 CLEANER HSK32
- A12707 CLEANER HSK40
- A12708 CLEANER HSK50



### A12136

Battery FANUC panel **POWER MOTION IA** (article fanuc A98L-0031-0028)



### A11255

Battery FANUC PM i-A Basic Unit (article fanuc LX98L-0031-0012)



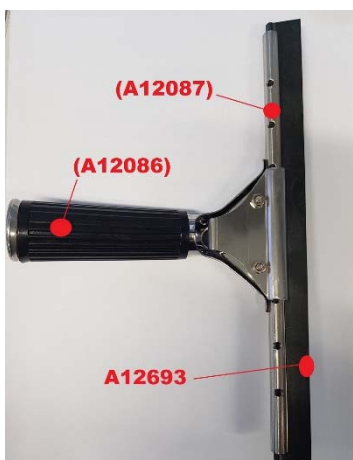
A11603

Battery 1.5V type LR20/D



A12377

Filter paper Cellulose+polyester



A12693

A12693 = Rubber 25cm  
(A12086=Handgrip) (A12087= steel rule 25cm)





A12692

Mirror 57x90cm with LED

A13226 or A13227

A13226 Pallet in wood for transport (only swiss)

A13227 Crate ( box ) for transport